



REPUBLIC OF THE GAMBIA

PRE- HARVEST CROP AND LIVESTOCK ASSESSMENT 2009/2010 CROPPING SEASON

**PRESENTED AT
TECHNICAL CONSULTATIVE MEETING ON THE
2008/09 AND THE 2009/2010 PROVISIONAL
CEREAL AND FOOD BALANCE SHEET**

ACCRA, GHANA

October 2009

Prepared by Mr. Aba G Sankareh. Deputy Director.
Mr. Ebrima Cham Sr. Planner

1 INTRODUCTION

2.0 PROGRESS OF THE 2009/2010 CROPPING SEASON

2.1 RAINFALL SITUATION

2.2 AGROMETEOROLOGICAL SITUATION

2.3 CROP SITUATION

2.4 PYTOSANITARY SITUATIONS

2.5 PASTURE AND LIVESTOCK SITUATION

2.5.1 PASTURES

2.5.2 LIVESTOCK WATERING POINTS

2.5.3 DISEASE CONTROL

3.0 THE 2009/2010 CEREAL AND OTHER FOOD PRODUCTION FORECAST

3.1 Methodology

Method of Sample Selection

The Survey Questionnaires

3.2 2008/2009 EXPOST CEREAL BALANCE SHEET

3.2.1 Cultivated Area

3.3 Cereal production estimated

4.0 THE ELEMENTS OF CEREAL BALANCE SHEET

4.1 Population

4.2 Available production

4.3 Trade imports and food aids

4.4 Stocks

5. FOOD SITUATION AND RISK ZONES

5.1 Food Aid

5.2 Food Situation

5.3 Market situation

6. IDENTIFICATION OF RISK ZONES AND INTERVENTIONS

Upper River Region

North Bank Region

Central River Region (North and South Bank)

7. CONCLUSIONS

1 INTRODUCTION

The Gambia is a small West Africa state surrounded by the Republic of Senegal on all sides except along the Atlantic Ocean. The width of the country varies from 24 to 28 kilometers. It has a total land surface area of 10,689 square kilometers of which 4300 square kilometers are regarded as arable agricultural land and related activities.

Traditionally, agriculture in the Gambia is, characterized by subsistence food crop cultivation, livestock rearing and semi-commercial cash crop production. Farmers in the Gambia are both Male and Female, each responsible for their own crops and for different stages of production for the crops they usually produce together the dominant cash crops include groundnuts and cotton whilst the coarse grains (Millet, sorghum & maize), swamp and upland rice are the major field crops cultivated. With rudimentary technology and therefore labour intensive, agriculture in the Gambia, is largely and essentially rain fed, although small areas of irrigation exist for rice and horticultural crops.

Administratively, the Gambia is divided into five divisions, one city council and one municipal council, namely: Western Region (WR), Lower River (LRR), North Bank Region (NBR) Central River Region (CRR), and Upper River Region (URR), Banjul City Council (BCC) and Kanifing Municipal Council (KMC).

2.0 PROGRESS OF THE 2009/2010 CROPPING SEASON

2.1 RAINFALL SITUATION

The Middle and Eastern parts of the country recorded the highest seasonal totals as cumulative rainfall in this area is above 1000mm. In the Western Third Yundum recorded the highest rainfall of more than 1313 which is 169% above the long term average. The rest of the stations recorded rainfall above 1000mm (tab.1).

When compared to the normal, we observe above normal rainfall in the Middle and Eastern Thirds of the country. In the Western Third, only Banjul and Jambanjelly recorded deficits of 70.7mm and 29.5mm respectively.

Despite the southwards journey of the Inter Tropical Discontinuity (ITD), the entire country experienced an increase in both frequency and intensity as compared to the preceding dekad. Dekadal totals recorded within 2 to 6 rainy days ranged from 53.3 to 135.0mm compared to the previous dekad's total rain fall ranged of 28.4mm to 73.8mm.

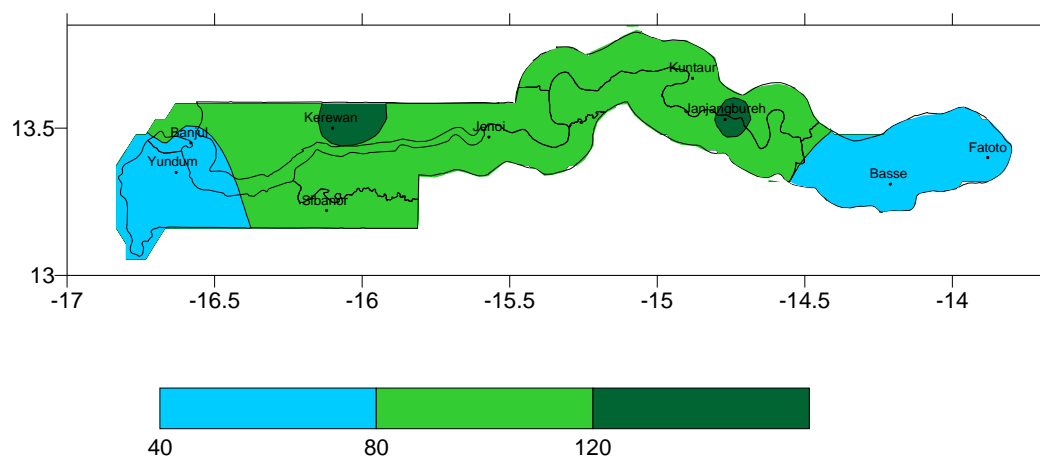


Figure 1a: Rainfall intensity during September 20 - 30, 2009

- 1 The cumulative rainfall (May 1 to September 30, 2009) ranged from a minimum of 641.8mm at Janjangbureh to a maximum of 1500.0mm at Kerewan (figure 1a). During the same period last year, the cumulative rainfall ranged from a minimum of 598.7mm at Naudeh to a maximum of 1338.8mm at Yundum. This indicates higher rainfall this year in most of the western and central part, while Eastern part had lower rainfall than last year.

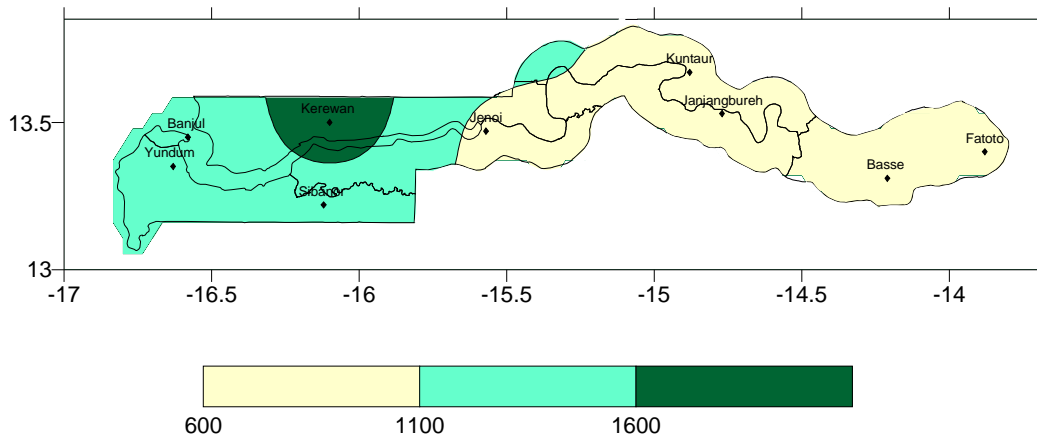


Figure 1b: Seasonal total from May 1 to September 30, 2009

- 2 As at September 30, 2009 the country average stood at 1026mm which is about 24% more than last year's average rainfall (827.0mm) and 39% above the long-term mean (736.8mm).

Table 1

Comparison of Rainfall (mm) 2002, 2003, 2004,2005,2006,2007,2008 and as at September 30th, 2009 with the long-term normal (1971-200)

STATION																	
	NORMAL	2002		2003		2004		2005		2006		2007		2008		2009	
		total	%	total	%	total	%	total	%	total	%	total	%	total	%	total	%
WESTERN																	
BANJUL	750.8	443.9	59	578.2	77	938.8	125	839.9		930	124	738.4	98	989.7	132	1039	138
SEREKUNDA	766.6	806.6	105	650.3	85	712.3	93	1613.2	210	918.5	120	1091	142	1200	157	1299	163
YUNDUM	806	538.1	67	694.8	86	635.8	79	1018.2	126	957.4	119	766	95	1323	164	1313	169
JAMBANJELLY	770	587.7	76	554.4	72	482.42	63	777	101	776	101	0	0	1288.1	167	NA	0
SIBANOR	836	598.6	72	792.7	95	927.8	111	962.2	115	851.6	102	768	92	1256.7	150	1229	147
MIDDLE																	
KEREWAN	715	522.5	73	685.4	96	757.9	106	958	134	945.1	132	866.4	121	1070	150	2029	284
YALLAL	668	395.5	59	561.6	84	1010.7	151	965.7	145	875.1	131	858	128	1049.6	157	0	0
JENOI	687	321.6	47	448.3	65	944.3	137	1176.7	171	782.7	114	796	116	963.4	140	959.1	140
KIAN - KARANTABA	858	503.7	59	794.5	93	795.7	93	717.5	84	741.9	86	729.6	85	1126.4	131	0	0
KAUR	614.5	568.9	93	849.3	138	928.2	151	1273.7	207	873	142	955.5	155	829.6	135	1140	186
KUNTAUR	580	419.8	72	698.4	120	725.3	125	1066.2	184	856.1	148	611.3	105	897.5	155	0	0
EASTERN																	
SAPU	717	394.7	55	752.4	105	792.3	111	1217	170	1001	140	874.4	122	1218.5	170	861.3	120
GEORGETOWN	693	408.7	59	930.7	134	785.8	113	1386.7	200	867.2	125	839.2	121	954.9	138	641.8	93
BANSANG	656.7	520.2	79	894.3	136	827.8	126	1207.3	184	709.9	108	863.7	132	1029.6	157	0	0
SARESOFI	709	570.7	80	964.3	136	844.8	119	1057.9	149	650.2	92	834.2	118	910.5	128	0	0
BASSE	778.7	673.8	87	929.4	119	865.2	111	1082.8	139	681.9	88	1049	135	909	117	905.8	116
FATOTO	694	559	81	944.6	136	869.7	125	958.9	138	729.8	105	905.9	131	1259	181	974.5	140
COUNTRY AVG	723.5	519.6	72	748.4	103	814.4	113	1095.6	151	832.2	116	796.9	112	1075	149	1126	155.7

2.1 AGROMETEOROLOGICAL SITUATION

During this dekad, mean temperatures remained generally unchanged compared to the previous dekad, except in the Middle Third where they dropped by 1°C or more. Likewise extreme temperatures did not change much compared to the previous dekad. Highest recorded are 32.8°C at Yundum in the Western Third, 36.0°C at Janjanbureh in the Middle Third and 36.2°C at Fatoto in the Eastern Third, whilst minimum temperature also ranged from 18.5°C to 22.0°C.

Maximum relative humidity remained generally above 90% and the minimum also remained above 60%.

Winds speeds across the country ranged from light (8km/h) to high (50km/h), the latter indicating the passage of a line squall.

2.3 CROP SITUATION

Generally, the agricultural situation across the country remained impressive, as most crops, are about to complete their cycles.

Harvesting of maize is almost completed except the late sown fields in Western Region and other isolated areas in the country. Like maize, early maturing sorghum have already been harvested but the late varieties are yet to be harvested in the Upper River Region and in some parts of Central River Region where it is predominant. Meanwhile, in the Western Third (areas such as North Bank Region and Lower River Region) the crop has reached its maturity stage.

Early millet harvesting is completed across the country. It has been observed that due the heavy downpour of rains witness in most parts of the country in September, the quality of the grains are seriously affect. Late millet are about to be harvested in the Upper River Region and in some parts of Western Region (WR) . Both the yield and the quality of late millet would be much better than last years. The only treat apart from post harvest lost are the birds (Weaver, Parrots Wild ducts and other grain eating birds).

Most upland rice especially the NERICA have reach their maturity stages and are being harvested.

In the swamp rice fields, transplanting of rice nurseries is still in progress in some parts of the country. The heavy downpour of rain in September, result in the flooding of the Tidal and rainfed rice schemes in the Upper River, Central River and North Bank Regions would be seriously affected. The Jahaly/ Pacharr rice fields, the perimeters developed by the Taiwanese ATM in Central River Region and as well as the Presidents Dampha Kunda fields and other rice fields in the Upper River Region are almost taken over by floods.

Groundnut fields across the country are at different growth stages Harvesting of the Philippine pink and other early maturing varieties are just starting. In some places, groundnuts have reached full maturity but farmers are waiting for the rains to subside before harvesting.

2.4 PYTOSANITARY SITUATIONS

No serious outbreak of pests that can threaten large-scale infestation have been reported countrywide. However, Locust continued to be the worst treat to crops in the country. The Government in recognition of this treat, has created the Africa Emergency Locust Project (AELP)

The projects development objective is to strengthen the capacity of the Gambia to prepare and implement programs and actions designed to prevent, control and manage desert locust infestations within its territory and in the region, and mitigate its economic, environmental, and social impacts, including impact on agricultural production, livestock and food supply.

This project has enhance the country's capacity to control and manage future locust infestations through the training of 30 trainers (technicians), 300 military officers, 5000 farmer brigades, who are equipped with 900 hand held sprayers, 15 vehicle mounted sprayers, 6 vehicles which are functional and prepared to rapidly respond to any future infestation. 7 stores were constructed.

The project has strengthened the early warning system through the training of 6 regional locust teams, 4 QUEST teams who are equipped with survey materials and are functional, regularly conducting survey and reporting and monitoring the global locust situation through the FAO monthly locust bulletin and are backed by the farmer brigades trained by the project on the identification and reporting of locust and grasshoppers, who are also reporting grasshopper outbreaks in a timely manner to the locust teams.

2.5 PASTURE AND LIVESTOCK SITUATION

Livestock production represents an important activity in the country's economy and livelihood of the population. Cattle, Sheep, goats, swine and different species of poultry are raised to generate income, supplement diet of rural families and for socio – cultural reasons. In this context, the importance of livestock in the balance of seasonal fluctuation in the food availability and as a safeguard against risk for the rural families should not be underestimated.

2.5.1 PASTURES

Given the high livestock population density and the encroachment on the range land for crop cultivation, availability of feed and water constitutes a major constraint to the livestock production in the country. The shortage of feed is exacerbated by frequent occurrence of bush fires during the dry season [January to April).

During the first part of the year (2009) January to June there was acute shortage of fodder and water for livestock. Most of the grasses on the range land in all the administrative Regions were destroyed by bush fires during the dry season. Consequently, severe weight losses and frequent outbreaks of diseases were registered in the herds across the country before the beginning of the rainy season.

However, with the commencement of the rainy season in June, the condition of the Range lands improved gradually. Hence feed become increasingly available to livestock as the growth of various fodder species was enhanced by the increase in rainfall.

2.5.2 LIVESTOCK WATERING POINTS

During the rainy season, there is no difficulty in this area, as water was obtained from temporary ponds and natural water catchments areas (ponds, old quarries and shallow wells in the low lands), which were filled up to capacity during the rainy season for livestock use and are easily accessible, by majority of animals.

2.5.3 DISEASE CONTROL

During the period under review, there were no outbreaks. However, disease control measures through vaccination against major diseases and the monitoring of animal movements both internal and around border areas have been on going during the rainy season. Deworming and treatment of draught animals for wounds is carried on request by Livestock Assistance.

The livestock of the country are doing relatively better; especially this time of the year when green grass is found in their immediate vicinity thus, reducing the energy expended back and forth looking for forage. Hence the overall feed situation is deemed satisfactory. Due to good rainfall throughout the Country. The natural rangelands continued to serve as the major source of forage. There are no difficulties for livestock watering, as water is available in temporary ponds and natural water catchments areas in addition to watering points constructed by the government throughout the country.

Diseases control (outbreaks and mitigation measures)

As regard to disease situation, very few outbreaks have been reported due to improvement in the nutritional status of the animals. Few cases of trypanosomiasis, Peste des Petits Ruminants (PPR) and Helminthiosis were occasional diagnosed and treated by Divisional Livestock Officers (DLOs) and Livestock Assistances (LAs).

3.0 THE 2009/2010 CEREAL AND OTHER FOOD PRODUCTION FORECAST

3.1 Methodology

A National Agricultural Sample Survey (NASS) is conducted every year by the Agricultural Statistics and Resource Economics Section (ASRE) of the Department of Planning Services (DOPS), Ministry of Agriculture (MOA).

As a nation-wide sample enquiry conducted annually, the survey has proved to be a very effective medium for collecting current agricultural data on major crops cultivated and livestock production and productivity as well as socio-economic data related to the farming community in the country. The conventional statistical methodology is used to estimate the required parameters.

Method of Sample Selection

For the NASS, a two-stage sampling procedure was applied.

First stage: the primary units (EAs) were selected with a probability proportional to its size (PPS) and the size is the number of households in each EA with each district as a stratum.

Second stage: the selection of the sample of agricultural holdings (Dabadas) was made with equal probabilities and without replacement, using once more the systematic selection method.

The Survey Questionnaires

In this survey, most of the data/information was obtained by direct investigation

This revised (Revised October 2009) crop estimate forecast for the 2009/2010 cropping season was based on subjective and objective observations. Multiple regression (NASS data series) with other variables such as rainfall data as at 30 th September, 2009, planting dates, number of fields cultivated and as well as the objective observation made by the farmers, Regional Agricultural officers, etc. The heavy down pour of rains observed in August and September were also put into consideration.

3.2 2008/2009 EXPOST CEREAL BALANCE SHEET

3.2.1 Cultivated area

The total area cultivated to cereals in the Gambia for the 2009/2010 season is estimated at 282,244 hectares an increase of 17.4 percent on the total area of 240,381 hectares in 2008 and of 42.3 percent on the total area for the average 2004-2008 (Table 4). On per crop bases area cultivated has shown an increasing trend for all crops in relation to last year and compared to the average 2004-2008 due to the better conditions of rains.

Table 4: Area cultivated in cereal in 2009/2010 in ha

Crops	2009	2008	Average	% Change	% Change
			2004-2008	2008	2004-2008
Early Millet	120 500	113 640	105 500	10.4	14.2
Late Millet	22 890	21 000	17 100	9.0	33.8
Sorghum	28 909	26 281	23 200	9.9	24.6
Maize	45 945	43 460	32 800	5.7	40.1
TOTAL COARSE GRAINS	218 244	204 381	178 566	6.8	22.2
Upland Rice	50 000	24 000		108.3	
Swamp Rice	11 500	10 000		15.0	
Irrigated Rice	2 500	2 000		25.0	
TOTAL PADDY	64 000	36 000	19 640	77.7	225.8
TOTAL CEREALS	282 244	240 381	198 206	17.4	42.3

Source DOP

3.3 Cereal production estimated

The crop production forecast for 2009 is higher than that of the 2008 for all coarse grains which constitutes a growth rate of 10.5 percent, except for irrigated rice and swamp rice. Irrigated rice is expected to decline with 25 percent and swamp rice with (-6.9 percent). These crops are severely affected by the floods.

Table 5: Gross cereal production 2009/2010 in tonnes

Crops	2009	2008	Average	% Change	% Change
			2004-2008	2008	2004-2008
Early Millet	121 500	114 594	102 574	6.0	18.4
Late Millet	20 029	17 220	15 760	16.3	27.1
Sorghum	30 441	25 624	24 260	18.8	25.5
Maize	51 733	44 894	32 472	15.2	59.3
TOTAL COARSE GRAINS	223 703	202 332	175 066	10.5	27.8
Upland Rice	47 500	22 800	18,201	108.3	160.9
Swamp Rice	9 775	10 500	10 300	-7.1	-5.1
Tidal Irrigated Rice	3 750	5 000		-25.0	
TOTAL PADDY	61 025	38 300	28 501	58.3	114.1
TOTAL CEREALS	284 728	240 632	203 567	18.3	39.8

Source: NASS

Table :Crop forecast of the 2009/2010 cropping season (Revised October 2009)

Crops	2,007	2,008	2,009	% Change
Area Planted (Ha)	94,151	113,640	120,500	6.0
Average Yield (Kg/Ha)	805	954	1,000	4.8
Total Production (MT)	75,825	114,594	121,500	6.0
Late Millet				
Area Planted (Ha)	17,567	21,000	22,890	9.0
Average Yield (Kg/Ha)	761	820	875	6.7
Total Production (MT)	13,368	17,220	20,029	16.3
Sorghum				
Area Planted (Ha)	21,720	26,281	28,909	10.0
Average Yield (Kg/Ha)	826	975	1,053	8.0
Total Production (MT)	17,951	25,624	30,441	18.8
Maize				
Area Planted (Ha)	36,156	43,460	45,945	5.7
Average Yield (Kg/Ha)	869	1,033	1,126	9.0
Total Production (MT)	31,408	44,894	51,733	15.2
Total Coarse Grains				
Area Planted (Ha)	169,594	204,381	218,244	6.8
Total Production (MT)	138,545	202,332	223,703	10.6
Upland Rice				
Area Planted (Ha)	10,722	24,000	50,000	108.3
Average Yield (Kg/Ha)	713	950	950	-
Total Production (MT)	7,645	22,800	47,500	108.3
Swamp Rice				
Area Planted (Ha)	5,886	10,000	11,500	15.0
Average Yield (Kg/Ha)	639	1,050	850	(19.0)
Total Production (MT)	3,749	10,500	9,775	(6.9)
Irrigated Rice (Tidal Irrigated)				
Area Planted (ha)	-	2,000	2,500	25.0
Average Yield (kg/ha)	-	2,500	1,500	(40.0)
Total Production (mt)	-	5,000	3,750	(25.0)
Total Paddy				

Damaged by floods

Area Planted (Ha)	16,608	34,000	64,000	88.2
Total Production (MT)	11,394	38,300	61,025	59.3
Total Cereals				
Area Planted (Ha)	186,182	238,381	282,244	18.4
Total Production (MT)	149,940	240,632	284,728	18.3
Groundnuts New Variety (73/33)				
Area Planted (Ha)	57,145	62,860	63,100	0.4
Average Yield (Kg/Ha)	550	775	800	3.2
Total Production (MT)	31,437	48,717	50,480	3.6
Groundnuts Old Variety (28/206)				
Area Planted (Ha)	60,446	70,843	72,540	2.4
Average Yield (Kg/Ha)	680	860	900	4.7
Total Production (MT)	41,120	60,925	65,286	7.2
Total Groundnuts				
Area Planted (Ha)	117,591	133,703	148,331	10.9
Total Production (MT)	72,557	109,641	115,766	5.6

The last year was below 40% of total production from the normal year this fact was also considered
The above are also based on multiple regression with other variables.

4.0 THE CEREAL BALANCE SHEET ELEMENTS

The elements Provisional Cereal Balance Sheet

4.1 Population

The population as at 30th April 2010 is estimated at 1,731,102 inhabitants (source: Gambian Bureau Of Statistics).

4.2 Available production

The gross cereal production is estimated at 284,728 tons, consisting of 61,025 tons of rice and 223,703 tons of coarse grain cereals. The total available cereal production is expected to be 229,814 tonnes, consisting of 39,666 tons of rice and 190,148 tons of coarse grain cereals.

4.3 Trade imports and food aids

The total for cereals envisaged as imports is estimated at 66,444 tons of rice.

The volume of food aids for the period from November 1st, 2009 to October 31st, 2010 is estimated at 2,432 tons of rice.

4.5 Stocks

The opening stocks as of October 31st, 2009 is 52,000 tons of cereals, of which 42,000 tons of rice kept by the private traders and 10,000 tons of dry cereals being farmer stocks.

The closing stocks as of October 31st, 2010 will be 75,735 tons of cereals, of which 19,907 tons of rice and 8,223 tons of wheat flour kept by the private traders and 47,605 tons of coarse grain cereals representing farmer stocks.

CEREAL BALANCE SHEET 2009/2010 PROVISIONAL CEREAL BALANCE SHEET

Unité: tonne.

ITEM	RICE	WHEAT	MILLET,SORGHUM ,MAIZE,OTHERS	TOTAL
Population as at 30 April.				1,731,102
I. <u>DISPONIBILITES</u>	81,666	-	200,148	281,814
Production				
Gross Production	61,025	-	223,703	284,724
Net Production	39,666	-	190,148	229,814
Initial Stocks	42,000	-	10,000	52,000
Producers	-		10,000	10,000
Others(Commercial)	42,000	-	-	42,000
<u>II. BESOINS</u>	99,538	41,114	238,027	378,678
Per/capita consumption (kg/hbt/an)	46	19	110	175
Total human consumption	79,631	32,891	190,421	302,943
Final Stock	19,907	8,223	47,605	75,735
Producers	-	-	-	-
Others(Commercial)	19,907	8,223	47,605	75,735
<u>III.GROSS SURPLUS/DEFICIT(-)</u>	(17,871)	(41,114)	(37,879)	(96,864)
<u>BRUT.</u>				
<u>IV. IMPORT/EXPORT.</u>	68,444	-	-	68,444
.imports	66,012		-	66,012
.food aid	2,432	-	-	2,432
.re-export	9,902	-	-	9,902
<u>V.NET SURPLUS/DEFICIT().</u>	50,573	(41,114)	(37,879)	(28,420)
<u>VI. APPARENT AVAILABILTY KG /CAPITA HBT</u>	29.2	(23.8)	(21.9)	(16.4)
(kg)				

Source :DOP/November 2009

CEREAL BALANCE SHEET
2008/2009 EXPOST CEREAL BALANCE SHEET

ITEM	RICE	WHEAT	MIL/SORGHO	TOTAL
			MAIZE/OTHERS	
Population as at 30/04/2009	-	-	-	1,673,603
Gross Production	38,300		196,142	234,442
Net Production	24,895	-	166,720.7	191,615.7
Initial Stocks	30,500	-	19,500	50,000
	Producers	-	18,000	18,000
	Others(Commercial)	30,500	1,500	32,000
Imports*	91,000	32,500	-	123,500
	. commercials	86,000	32,500	118,500
	.food aid	5,000	-	5,000
TOTAL: RESSOURCES/EMPLOY	146,395	32,500	186,220.7	365,115.7
Exports	27,300	-	-	27,300
Final stock	42,000	-	10,000	52,000
	Producers	-	10,000	10,000
	Others(Commercial)	42,000	-	42,000
Apparent Consommation				
	. total (tons)	77,095	32,500	176,220.7
	. par habitant (kilogrammes)	46	19	105
Consumption Norm				175

OFFICIAL (kg/an/hbt)

5. FOOD SITUATION AND RISK ZONES

COMMERCIAL IMPORTS AND FOOD AID

During the period commercial imports of rice are estimated at 66,012 metric tonnes, Re-exports trade in rice, sugar and wheat flower mainly to Senegal, Mali, Guinea and Guinea-Bissau is affected by the global economic crises. The LUMO estimated at about 30 percent of total imports of these commodities but this figure would be reviewed in the meeting with the commercial importers on Tuesday 20 October, 2010.

Commercial rice stocks and planned imports are adequate to meet consumption requirements of the Gambian population in the months ahead. Thus, the current food supply situation continues to be satisfactory notwithstanding the fact that maize, millet and rice the staple food are being harvested

5.1 Food Aid

The World Food Program has also increased its food aid during the period under review to 2,432.3 mt of rice and about 90 mt of mixed CSB.

5.4 Food Situation

The food situation outlook is generally good across the country. The food production in 2009 is expected to cater for over 50% of the domestic food needs of the rural farmers. Even with the worst scenario, the prospects for food supplies will be greater than last year. It could be noted that over 50,000 mt of rice has been imported by the commercial sector alone during the first half of the year. Piles of cereal stocks especially rice are observed in the main markets and in the LUMO markets across the country.

5.5 Market situation

The country experienced sharp increases in prices in beginning of the season but with the intervention of the head of State in importing adequate stocks of rice at an affordable price and above all waive most of the tariff paid to government and Gambia Ports Authority in particular.

In an effort to reduce the price meat The Gambia Government and the Kanilai Farms Limited in particular intervene by providing meat at an affordable price of D60.00 /kg for Meat and Bone and D80.00/kg for Steak. Due to the dominance of foreigners in the butchery sub-sector, the price of meat continued to increase steadily in the beginning of the RAMADAN month (August).

Cattle Prices at the Weekly Markets (Lumos)

3 years	=	D4000	to	D5000
4 years	=	D6000	to	D7000
5 years	=	D8000	to	D10000
6 years (above)	=	D10000	to	D12000

Prices for small ruminant in the Weekly Market (Lumos)

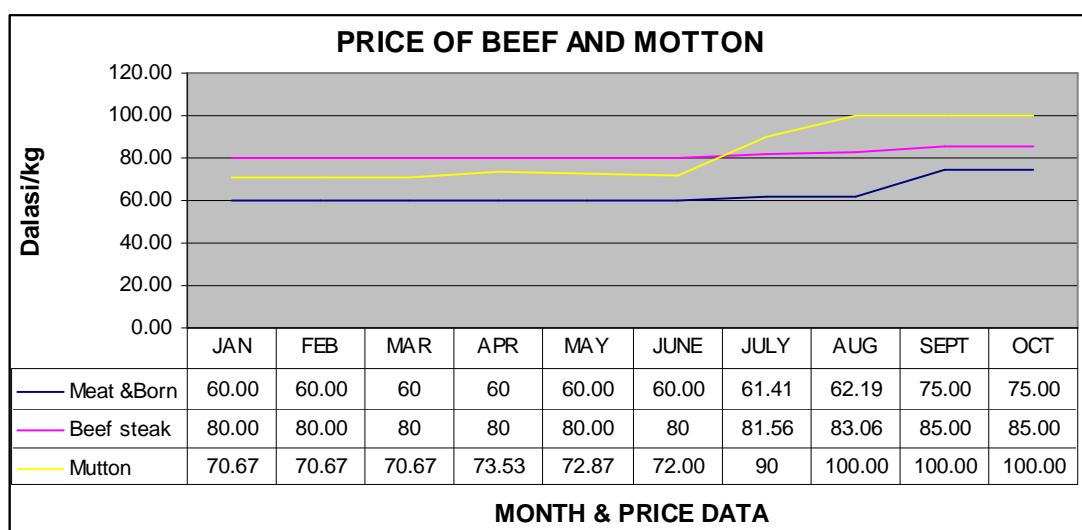
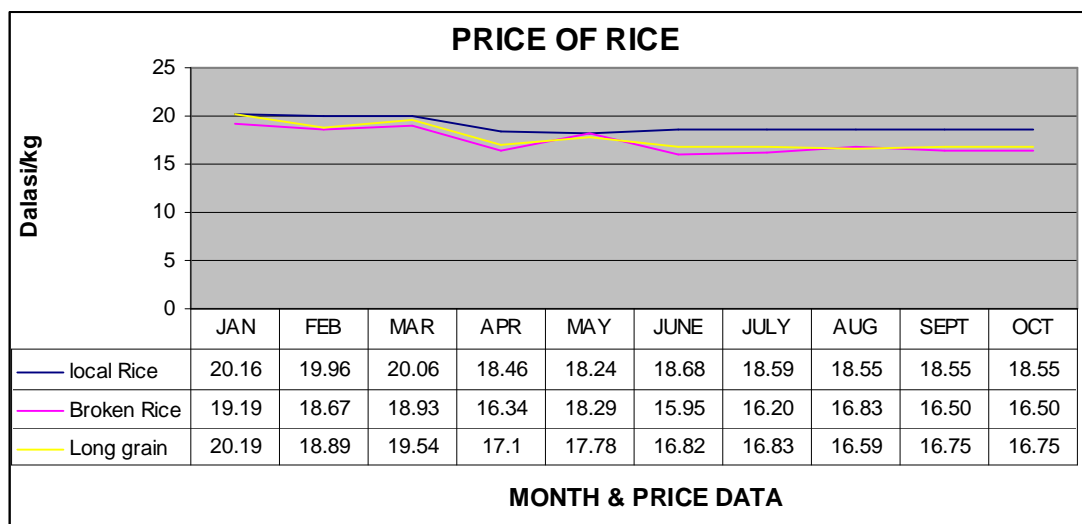
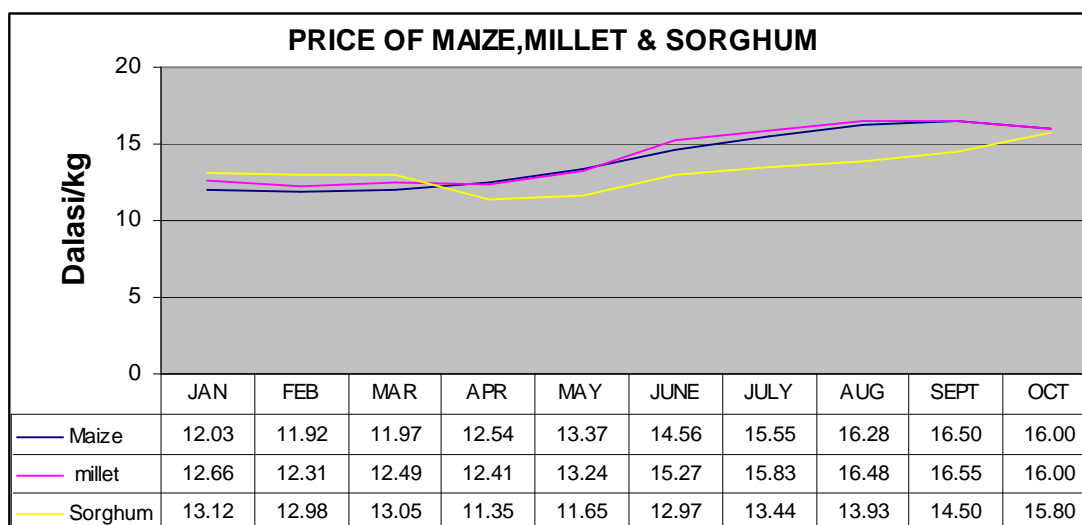
Sheep

Male	=	D1500	to	D3000
Female	=	D1300	to	D2000

Goats

Male	=	D1200	to	D1600
Female	=	D1400	to	D2000

In October, the prices of cereals at weekly markets continued to fluctuate depending on the volume of the commodities supplied and demanded at the markets. See the table below for details.



AGRICULTURAL COMMODITY PRICES FROM JANUARY TO DECEMBER, 2008

COMMODITY	JAN	FEB	MAR	APR	MAY	JUNE	JULY	AUG	SEPT	OCT	NOV	DEC
Cereal												
Maize	10.00	12.00	15.00	15.00	15.00	16.66	18.66	19.50	19.50	14.26	10.50	7.14
Millet	10.00	12.25	13.00	13.00	18.00	18.00	18.00	20.05	20.05	14.30	10.50	7.14
Sorghum	10.00	12.00	15.00	15.00	15.00	15.50	16.66	18.88	18.88	14.00	8.00	5.71
Local rice	10.25	12.25	15.25	17.50	18.50	18.50	19.50	19.50	21.00	20.66	22.95	22.95
Broken Rice	12.00	14.00	15.00	16.50	18.25	18.50	19.00	20.00	20.00	22.22	22.74	20.00
Long Grain	12.00	14.00	14.75	15.75	16.90	18.00	18.00	19.20	19.00	20.25	21.45	21.25
Findo	35.00	40.00	45.00	55.00	58.50	86.30	88.88	90.00	90.00	90.00	85.50	75.00
G/nut	20.00	20.00	24.00	32.00	32.00	35.00	35.50	37.00	35.00	30.00	21.42	14.44
Beans	15.00	15.50	16.66	16.66	18.00	18.00	27.00	27.00	25.00	23.33	25.00	22.00
Fruits												
Orange	20.00	20.00	20.00	20.20	20.00	21.00	20.00	22.22	26.66	27.75	25.00	15.00
Mangoe	NA	NA	12.50	12.50	18.00	20.00	25.00	20.00	NA	NA	NA	NA
Banana	25.00	25.00	20.00	25.00	30.00	28.85	25.00	30.00	30.00	28.85	25.00	21.06
Cashew	NA	NA	NA	NA	NA	NA	NA	NA	NA	NA	NA	NA
Pawpaw	NA	NA	10.00	10.00	14.00	15.00	20.00	20.00	20.00	20.00	25.00	NA
Lime	19.50	20.00	17.75	17.75	18.85	18.85	20.00	20.06	22.66	28.38	25.00	23.87
Vegetables												
Cabbage	20.00	20.00	20.00	21.00	21.00	22.15	30.00	32.22	40.00	50.00	33.57	35.39
Tomato Small	15.00	17.17	18.88	18.88	20.00	20.00	20.11	20.11	22.00	28.27	NA	28.33
Tomato Big	16.00	22.00	22.00	22.22	22.95	24.00	26.19	26.19	25.00	25.25	24.70	24.70
Garden Egg	12.00	12.20	12.20	12.20	14.40	18.99	20.89	20.89	22.66	22.66	20.00	22.92
Lettue	25.00	25.00	28.00	30.00	35.00	35.00	30.10	22.22	18.88	20.00	20.00	20.00
Okra	10.00	15.00	20.00	20.00	48.80	48.80	50.00	50.50	50.50	52.22	50.00	43.53
Paper sweet	38.89	40.00	40.00	44.44	60.00	60.00	70.00	70.00	75.75	80.00	55.00	37.77
Paper Hot	60.00	75.00	75.00	80.00	85.50	95.00	95.50	100.00	100.10	100.10	96.29	96.29
Onion Exotic	16.00	17.75	18.00	20.00	20.00	21.10	25.00	25.00	20.00	21.50	20.00	20.00
Onion Leaf	5.00	8.50	8.50	10.00	10.00	11.11	12.50	12.50	14.50	15.00	15.00	15.00
Bitter Tomato	20.00	20.20	25.00	25.00	30.00	20.00	30.00	40.00	42.00	38.60	20.00	22.22
Tubers												
Cassava	10.00	14.40	14.40	15.08	20.00	20.20	20.66	23.25	25.00	25.00	20.00	22.66
Sweet potato	15.00	18.00	18.00	18.00	20.00	20.00	23.25	30.00	24.44	28.71	25.00	19.71
Irish potato	16.00	18.00	18.00	18.50	20.00	21.00	25.00	25.00	25.00	20.00	28.33	20.00
Carrot	35.00	35.00	35.00	38.80	35.55	40.44	50.00	55.55	60.00	60.00	NA	NA
Livestock product												
Meat & Bone	75.00	75.00	75.00	75.00	75.00	75.00	75.00	75.00	60.00	60.00	60.00	60.00
Beef steak	90.00	90.00	90.00	90.00	90.00	90.00	90.00	90.00	80.00	80.00	80.00	80.00
Mutton	110.00	110.00	110.00	110.00	120.00	120.00	120.00	120.00	100.00	100.00	100.00	100.00
Milk	20.00	20.00	20.00	20.00	20.00	20.00	20.00	20.00	20.00	20.00	25.00	25.00
yoghurt	25.00	25.00	25.00	25.00	25.00	25.00	25.00	25.00	25.00	25.00	30.00	30.00

AGRICULTURAL COMMODITY PRICES FROM JANUARY TO 20th OCT. 2009

Cereals	JAN	FEB	MAR	APR	MAY	JUNE	JULY	AUG	SEPT	OCT	NOV	DEM
Maize	12.03	11.92	11.97	12.54	13.37	14.56	15.55	16.28	16.50	16.00		
Millet	12.66	12.31	12.49	12.41	13.24	15.27	15.83	16.48	16.55	16.00		
Sorghum	13.12	12.98	13.05	11.35	11.65	12.97	13.44	13.93	14.50	15.80		
Local Rice	20.16	19.96	20.06	18.46	18.24	18.68	18.59	18.55	18.55	18.55		
Broken Rice	19.19	18.67	18.93	16.34	18.29	15.95	16.20	16.83	16.50	16.50		
Long grain	20.19	18.89	19.54	17.1	17.78	16.82	16.83	16.59	16.75	16.75		
Beans	24.17	25.5	24.84	26.05	25.25	25.75	29.37	29.37	29.30	25.00		
Findo	58.73	56.22	57.48	47.63	54.38	48.03	51.88	54.98	55.00	55.20		
G/Nut	25.96	25.60	25.78	23.93	23.98	24.84	25.95	29.21	29.50	29.25		
Vegetables												
Cabbage	27.2	31.58	29.39	23.52	24.17	23.52	23.69	24.77	25.00	24.95		
Tomato Small	28.14	22.83	25.49	17.89	21.77	11.93	15.68	16.95	16.80	16.50		
Tomato Big	28.42	24.48	26.45	19.58	27.45	14.89	16.92	19.54	18.50	18.33		
Garden Egg	23.84	23.52	23.68	19.42	20.56	19.40	19.66	21.59	20.00	20.06		
Lettuce	18.88	19.19	19.04	19.24	20.20	20.50	20.25	20.30	20.00	20.10		
Okra	41.51	44.65	43.08	43.47	48.25	42.81	39.67	37.36	34.00	30.00		
Paper sweet	52.03	54.96	53.49	68.78	74.51	69.24	63.08	76.32	70.00	68.50		
Paper Hot	72.18	74.35	73.26	78.39	85.95	78.39	72.51	73.57	73.21	70.00		
Onion Exotic	20.21	20.09	20.15	19.26	19.27	19.23	24.90	20.18	20.00	20.00		
Onion Leaf	17.22	17.90	17.56	15.09	15.67	15.10	15.39	15.44	15.25	15.18		
Bitter Tomato	26.78	26.88	26.83	25.33	27.61	25.33	25.33	25.25	25.00	24.79		
Carrot	35.8	36.92	36.36	37.4	38.70	39.39	34.00	47.90	39.30	39.00		
Sweet potato	20	19.61	19.81	18.33	20.14	18.41	20.41	21.64	20.32	20.00		
Irish potato	20.4	20.23	20.31	20	18.89	20.00	21.42	21.90	22.05	22.03		
Cassava	16.88	19.45	18.16	16.92	17.13	16.97	17.14	17.14	17.25	17.20		
Fruits												
Orange	17.31	17.30	17.31	36.89	38.18	40.15	Na	16.92	17.00	17.10		
Mangoe	Na	Na	Na	11.93	14.05	11.93	13.81	19.06	NA	NA		
Banana	24.41	26.68	25.54	25.18	26.41	25.18	30.31	33.72	25.00	25.00		
Cashew	Na	Na	Na	Na	Na	Na	Na	Na				
Pawpaw	30	25.00	27.5	16.22	16.52	18.61	24.05	20.07	21.09	21.00		
Lime	24.28	26.33	25.31	29.33	28.40	29.33	30.54	34.70	34.85	32.76		
Livestock product												
Meat & Bone	60.00	60.00	60	60	60.00	60.00	61.41	62.19	75.00	75.00		
Beef steak	80.00	80.00	80	80	80.00	80	81.56	83.06	85.00	85.00		
Mutton	70.67	70.67	70.67	73.53	72.87	72.00	90	100.00	100.00	100.00		
Milk	31	33.33	32.17	24.4	24.40	24.40	23.70	18.02	18.00	18.00		
Yoghurt	28.75	29.65	29.20	29.65	29.65	29.65	29.65	28.15	25.00	25.00		

6. IDENTIFICATION OF RISK ZONES AND INTERVENTIONS

The heavy down pour of rains witness in the last decad of August, and early September have cause serious damage to crops in some parts of the country. The extend of the damage is being access. The most affected Regions are Central River Region. North bank Region, Upper River Region Western Region and Parts of Kanifing Municipality.

NORTH BANK REGION

NBR heavy downpour of rains resulted into lots of damage on infrastructure and household items including food and clothing. Damages are mainly caused by water and/or wind erosion as well washing off or submerging.

The losses of assets resulting from flood damage left many households vulnerable. A total of 306 individuals are affected in the NBR according the latest update. In summary a total of about 636.70 hectares were affected by the negative impact of rainfall mainly on rice but also on early millet, groundnut and maize in some areas.

Approximately 80 meters dike and about 2.5 kilometers of access road destroyed in upper Nuimi. At the beginning following the first floods occurrences farmers endeavored to address the situation by employing the following coping strategies:

- Transplanting varieties that can do strive well in water
- Repair and maintenance of contour bunds in upland fields
- Planting water melon in some fields
- However, as more heavy rains followed, these coping strategies proved unsuccessful.
- Table 1 shows the crop area affected by floods (see Annex III for details) and Table 2 on the socio-economic impact.
-

Table 1: Area affected by floods

District	Area affected (ha)
Sabach Sanjal	85.3
Upper Baddibou	55.8
Central Baddibou	96.2
Lower Baddibou	110.8
Jokadou	67.0
Lower Nuimi	13.0
Upper Nuimi	214.5
Regional Total	642.5

Table 2: number affected per district in NBR

District	Villages	Household heads	Individuals
Lower Nuimi	2	40	100
Upper Nuimi	30	65	760
Jokadou	10	110	730
Lower Baddibou	25	32	126
Central Baddibou	12	160	380
Upper Baddibou	15	73	386
Sabach Sanjal	20	190	298
	114	670	2780

CENTRAL RIVER REGION

In this region the most serious effect of floods was the perturbation of the tidal rice cropping calendar. Floods came at the time transplanting should start and farmers waited for the water to recede that never happened. The most affected areas by floods in this region are:

Jahally and Pachar (Lower Fulladu District – CRR South)

Sukuta (Niani District – CRR North)

Jereng (Niamina West District –CRR South)

Seedlings that were transplanted before the flooding got rotten, whilst those that were not transplanted, had to be abandoned due to inability in getting the water to recede.

Table 3: area submerged and people affected

Name of the affected community	District	Area submerged (ha)	People affected
Jahally & Pachar	Lower Fulladu	560	Over 2500
Sukuta	Niani	26	Over 200
Jareng	Niamina West	100	Over 2000
Total	3 district	686	Over 3200

Table 4: area affected per crop and per district

District	Villages	Early Millet	Maize	Sorghum	Rice	Groundnut	District Total
Sandu	5	1	39	5	118	2	168
Wuli East	10	3	68	13	582		676
Wuli West	5	2	12	9	422		450
Fulladou East	5		10		512		527
Toumana	5		5		446		456
Kantora	5		3		360		368
Region Total	35	6	137	27	2440	2	2645

7. CONCLUSIONS

Despite a late and hesitant start of the growing season, records show that from mid-June to early October the season has been characterized by regular and at times extremely heavy rains throughout the country.

Regular rains have been very beneficial to upland rainfed crops including upland rice allowing for a good development. However, extremely heavy rainfall events of August and September have resulted into floods that particularly perturbed lowland and swamp rice crop calendar and seriously hampered the production potential.

With a calm phytosanitary situation the total cereal provisional production is estimated at 284,728 tons. It will be 10.5% and de 27.8% higher than the 2008 and the last 5 year average production, respectively.

The pastoral situation is good with all water points filled to their potential. The animal health situation is calm despite the presence of Pest des Petits Ruminants, pasteurolosis and Newcastle disease. However, preventive measures have been taken to prevent outbreaks.

Considering the crop and livestock situations described above, we would like to make the following suggestions and recommendations:

For famers to take full advantage of a good rainy season such as the current one agricultural input should be made available in a timely manner ;

Considering the important lowland and swamp rice transplanting delays, it's good to sensitize farmers to give up transplanting in order to avoid overlapping on the next dry season cropping calendar. Efforts and resources should rather be concentrated to prepare for the next cropping season, which is known to be better in terms of yield and production ;

Development of cereal banks should be accelerated to facilitate loans to farmers to solve the problems they've been always facing such as accessing input in a timely manner and develop storage capacity to wait for better marketing opportunities;

The stakeholders (farmers and import/export merchants) that have started talks under the auspices of the Chamber of Commerce deserve to be supported by all the national and decentralized technical services of the Ministry of Agriculture for a better marketing of their produce;

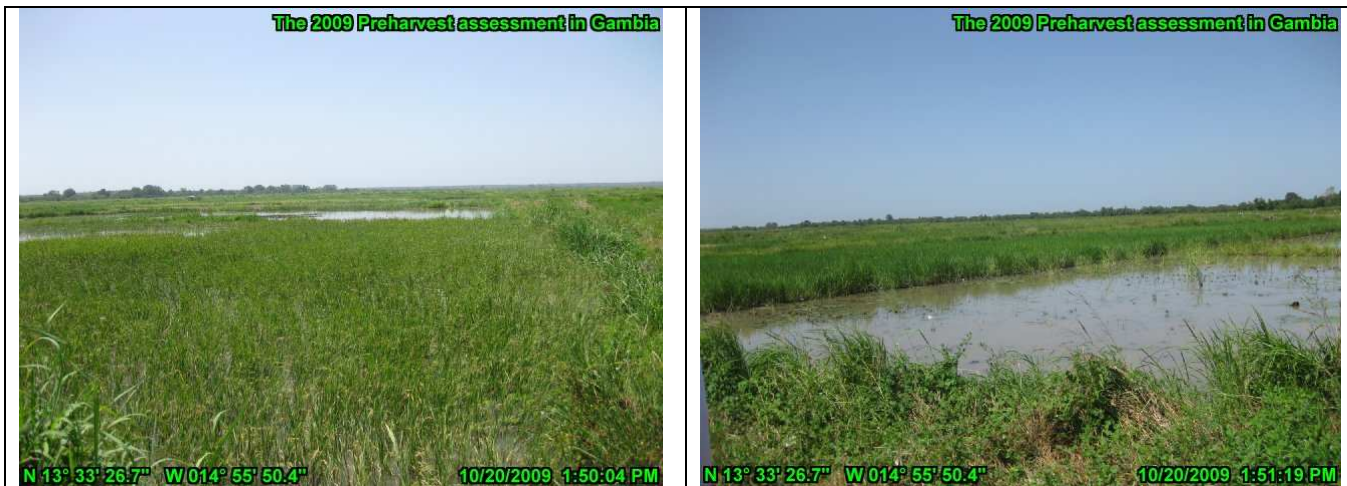
Considering the good production of pastures this year, protection measures should be reinforced to avoid bush fires damage;

The promotion of poultry in rural, urban and peri-urban areas has been a very good measure intended to improve stakeholders' income and improve population diet. Local production should be further supported through subsidies for protection against competing imported products that are cheaper;

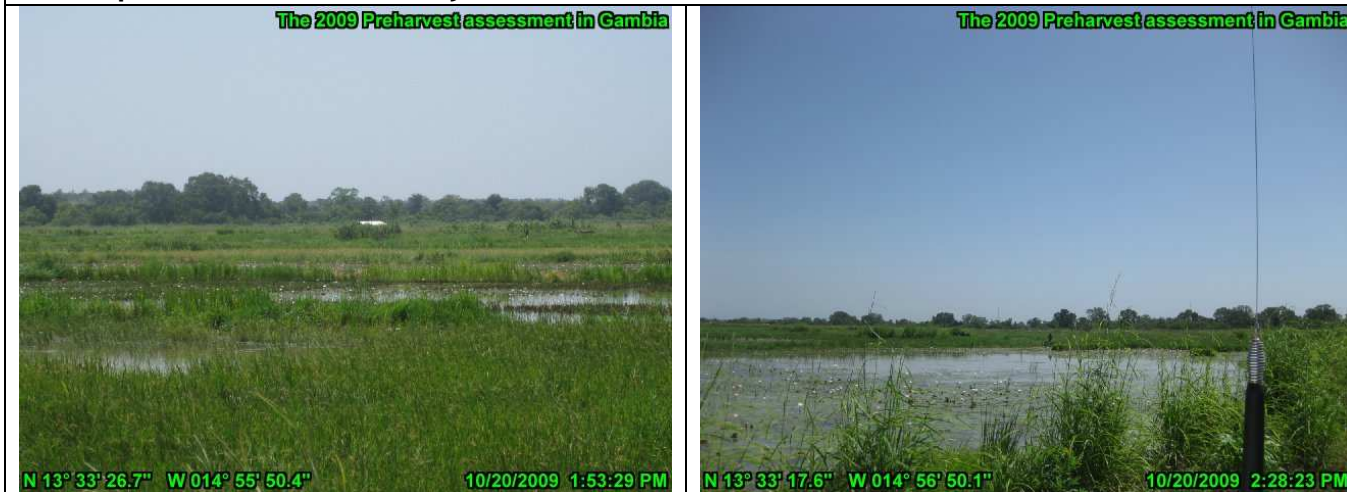
For a good assessment of the net production, it is necessary to conduct a study to identify the different causes of post harvest losses and determine the amount lost for each.

Annex II: Illustrations of flood damage

Photographic illustrations of flood impacts on lowland and swamp rice in Jahally-Pacharr and Fande Kunda.



These photos taken in Jahally show rare cases of relative success



Water lilies in what should be rice plots as shown in these photos are common sight





In the photos above some farmers in Pacharr have not given up transplanting yet despite the water at knee level and seedlings that were maybe too old for transplanting



These photos were taken in Basse – Fande Kunda. The left show what is left of rice when flood water receded and right shows the level of flood water on the grass materialized by the color difference, 1 km before the rice scheme.

3 Annex III: Detail of crop area affected by flood in the NBR

no	NAME OF VILLAGE	DISTRICT	Area affected (ha)
1	Tamba Koto	Sabach Sanjal	5.25
2	SABA Sukoto	Sabach Sanjal	11
3	Kataba	Sabach Sanjal	20
4	Kani kunda	Sabach Sanjal	21
5	Sarakunda	Sabach Sanjal	8
6	Kumbija	Sabach Sanjal	20
Sub total			85.25
7	Farafeni	Upper Baddibou	15.75
8	Jajari	Upper Baddibou	25
9	India	Upper Baddibou	15
Sub total			55.75
10	Wayawurr	Central Baddibou	10.45
11	NJABAkunda	Central Baddibou	45.75
12	Mandureh	Central Baddibou	25
13	Salikine	CENTRAL Baddibou	15
Sub Total			96.2
14	Banni	Lower Baddibou	8.5
15	Njawara	Lower Baddibou	28
16	Sabaa	Lower Baddibou	12.75
17	Gunjur	Lower Baddibou	14.5
18	Kerewan	Lower Baddibou	13
19	Kinteh kunda	Lower Baddibou	8
20	Suwareh kunda	Lower Baddibou	13
21	Toroba	Lower Baddibou	13

Sub Total			110.75
22	Darsilameh	Jokadou	22
23	Kerr Omar Saine	Jokadou	45
Sub Total			67
24	Berending	Lower Nuimi	13
Sub Total			13
25	Nemakunku	Upper Nuimi	85.25
26	Bakalarr	Upper Nuimi	56.25
27	Kerr Demba Holleh	Upper Nuimi	18
28	Sika	Upper Nuimi	25
29	Aljamdou	Upper Nuimi	30
Sub Total			214.5